



350

PARTS LIST

General Information

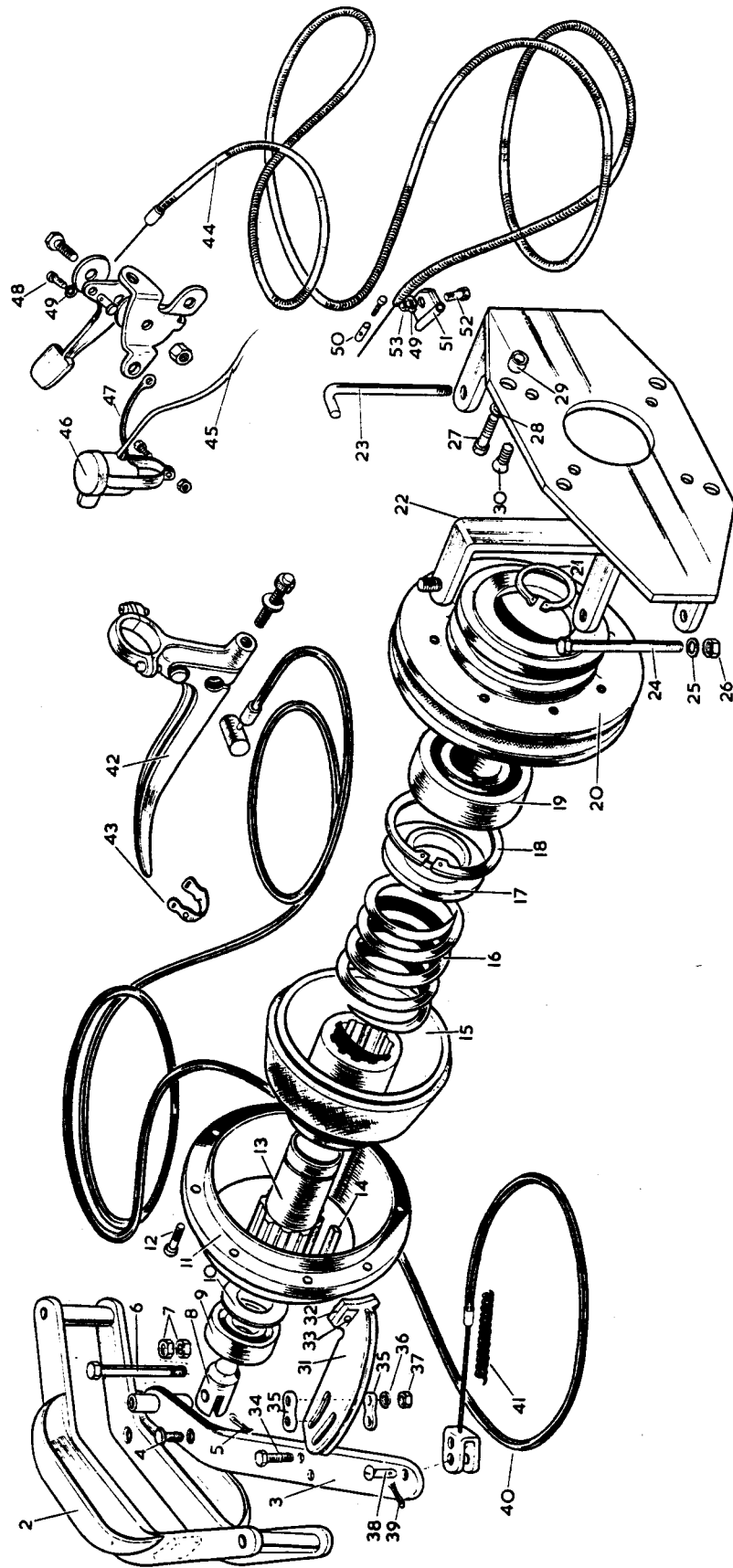
Serial No. Prefix 310A.....
 Serial number is located on left hand side of
 engine mounting chainbox.

Special Notes:

▼	Left Hand	Λ	Alternative
▼	Right Hand	*	Change since last print
▲	Upper	306357x6	Quantity
▼	Lower	306357#	Quantity as required
▼	Width	III	Only for
▼	Length	III	Central
↑	From serial number	III	Offset
↑	Up to serial number	Z	Number of teeth
↑	rpm		

Catalogue no.	Issue	Page Affected
209005004	5/90	New Issue

Note: Some components illustrated may no longer be available. All components have been shown for identification purposes.

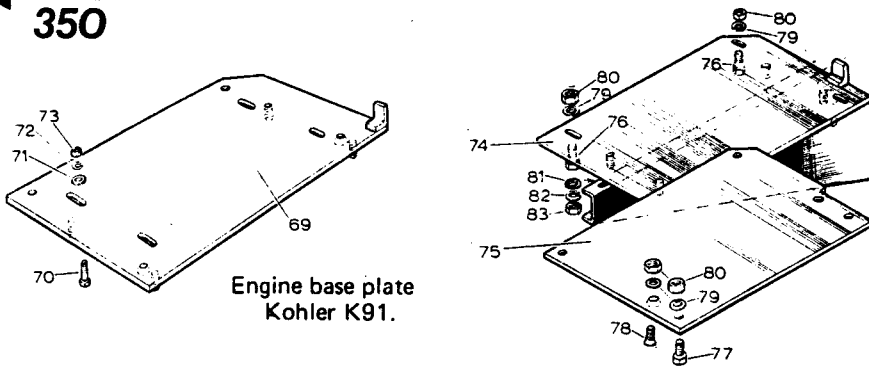


Clutch, Brake & Controls

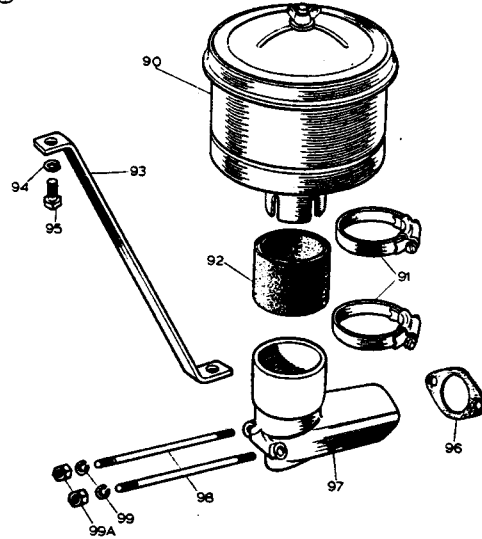
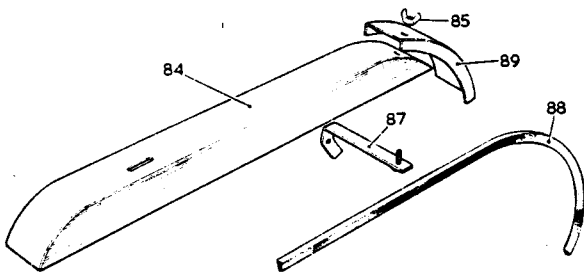


Item	Part No	Description	Qty.	Item	Part No	Description	Qty.
Clutch Assembly				24	101205240	Bolt $\frac{5}{16}$ " UNC x 3"	1
	66919	Clutch assembly complete Briggs & Stratton Illustration nos. 2-20, 22-26	1	25	108051030	Shakeproof washer $\frac{5}{16}$ " internal	1
	68937	Clutch assembly complete Kohler K91T Illustration nos. 2-26, 30-36	1	26	107205010	Nut $\frac{5}{16}$ " UNC	1
	68923	Clutch assembly complete Kohler K141T Illustration nos. 2-29, 31-37	1	27	101406065	Setscrew $\frac{3}{8}$ " UNC x $\frac{3}{4}$ " hex head	4
2	66427	Control frame	1	28	108061130	Shakeproof washer $\frac{3}{8}$ " internal	4
3	66391	Operating arm	1	29	316	Spacer	4
4	25914	Pin	1	30	117305050	Socket head countersunk screw $\frac{5}{16}$ " UNF x $\frac{5}{8}$ " Unbrako KA Kohler K91	4
5	208010040	Split pin $\frac{1}{16}$ " x $\frac{1}{2}$ "	1		68932	Brake block assembly (riveted or glued) comprising:—	1
6	101205220	Bolt $\frac{5}{16}$ " UNC x $2\frac{3}{4}$ "	1	31	68933	Brake shoe	1
7	107205020	Locknut $\frac{5}{8}$ " UNC	2	32	68936	Brake block	1
	68310	Cone clutch assembly-Kohler K91	1	33	208029030	Rivet $\frac{1}{8}$ " x $\frac{3}{8}$ " (early machines only)	2
	67493	Cone clutch sub-assembly - up to machine serial number 3132827 Briggs & Stratton 3161266 Kohler K141 comprising:—	1	34	141410070	Bolt No. 10 UNC x $\frac{7}{8}$ " hex head	2
8	66926	Clutch release	1	35	69123	Keeper plate	2
9	250616045	Ballrace double sealed $\frac{5}{8}$ " x $1\frac{9}{16}$ " x $\frac{7}{16}$ "	1	36	108030545	Spring Washer $\frac{3}{16}$ "	2
10	14509	Washer	1	37	107210205	Nut No. 10 UNC	2
11	66921	Clutch cone outer	1	34	343405255	Whiz-tite flanged bolt 50 x 25	2
12	102403040	Setscrew No. 10 UNC x $\frac{1}{2}$ " Csk. hd.	8	35	Not allocated		
13	66924	Clutch drive shaft K141 and Briggs & Stratton	1	36	Not allocated		
	68311	Clutch drive shaft K91	1	37	307205225	Whiz-tite flanged nut 5mm	2
14	66927	Key K141 and Briggs & Stratton	1	38	34233	Pin	1
	68312	Key K91	1	39	208010040	Split pin $\frac{1}{16}$ " x $\frac{1}{2}$ "	1
15	66922	Clutch cone inner	1	40	64417	Clutch cable assembly includes:—	1
16	66923	Spring	1	41	26575	Spring	1
17	66925	Spring pad	1	42	207001090	Clutch lever - Doherty 107 PA $\frac{7}{8}$ " L.H.	1
N.I.	67454	Thrust bearing pad	1	43	208003290	Cable clip - John Bull - size 'S'	2
	67021	Thrust pad for K91	1	44	207001220	Throttle control - Auto-car electric type WC 223 - red handle, inner cable $57\frac{1}{2}$ " long outer cable $54\frac{1}{2}$ "	1
19	251227075	Ballrace L.S. 12 RSSV 3 $1\frac{1}{4}$ " x $2\frac{3}{4}$ " x $\frac{11}{16}$ " double sealed	1	45	203102330	Ground lead extension 65" L.H. 146B-5312-K91T engine	1
20	66920	Engine pulley	1	45	69460	† Long cable and terminal - K141T engine, from engine serial number 2000001 with external condenser	1
	68924	*Cone clutch sub-assembly Kohler K141T	1	46	207005100	Stop switch - Miller D.2 Spec $\frac{7}{8}$ " bar - $\frac{7}{8}$ " screw	1
	68925	*Cone clutch sub-assembly Kohler K91T *From machine serial number 3161267 comprising:—	1	47	67782	Short cable and terminal	1
8	66926	Clutch release	1	48	103902030	Setscrew 2BA x $\frac{3}{4}$ " cheese head	2
9	250616045	Ballrace - Fischer 2062 $\frac{5}{8}$ " x $1\frac{9}{16}$ " x $\frac{7}{16}$ " double sealed	1	49	108030540	Spring washer $\frac{3}{16}$ "	3
10	14509	Washer	1	50	203015810	Cable nipple and screw	1
11	68930	Clutch cone outer	1	51	203210149	Throttle cable clip - Kohler part no. 210149	1
12	102403040	Countersunk setscrew No. 10 UNC x $\frac{1}{2}$ "	8	52	101703040	Setscrew $\frac{3}{16}$ " BSF x $\frac{1}{2}$ " Hex head	1
13	68938	Clutch drive shaft - Kohler K91T	1	53	107503010	Nut $\frac{3}{16}$ " BSF	1
	208012320	Tension pin $\frac{3}{16}$ " x $1\frac{1}{4}$ " - Kohler K91	1	54-58	Not allocated		
13	68928	Clutch drive shaft - Kohler K141T	1				
14	68312	Key - Kohler K91T	1				
14	66927	Key - Kohler K141T	1				
15	68908	Clutch cone inner and lining	1				
16	66923	Spring	1				
17	68931	Spring pad	1				
18	208001160	Circlip $2\frac{3}{4}$ " internal	1				
19	251227075	Ballrace - L.S. 12 RSSV 3 - $1\frac{1}{4}$ " x $2\frac{3}{4}$ " x $\frac{11}{16}$ " double sealed	1				
20	68929	Engine pulley	1				
21	208002080	Circlip $1\frac{1}{4}$ " external	1				
22	68313	Backplate	1				
23	66440	Locking pin	1				

NOTE: †before this serial number, the condenser was mounted internally and the earth was part of the Kohler engine.

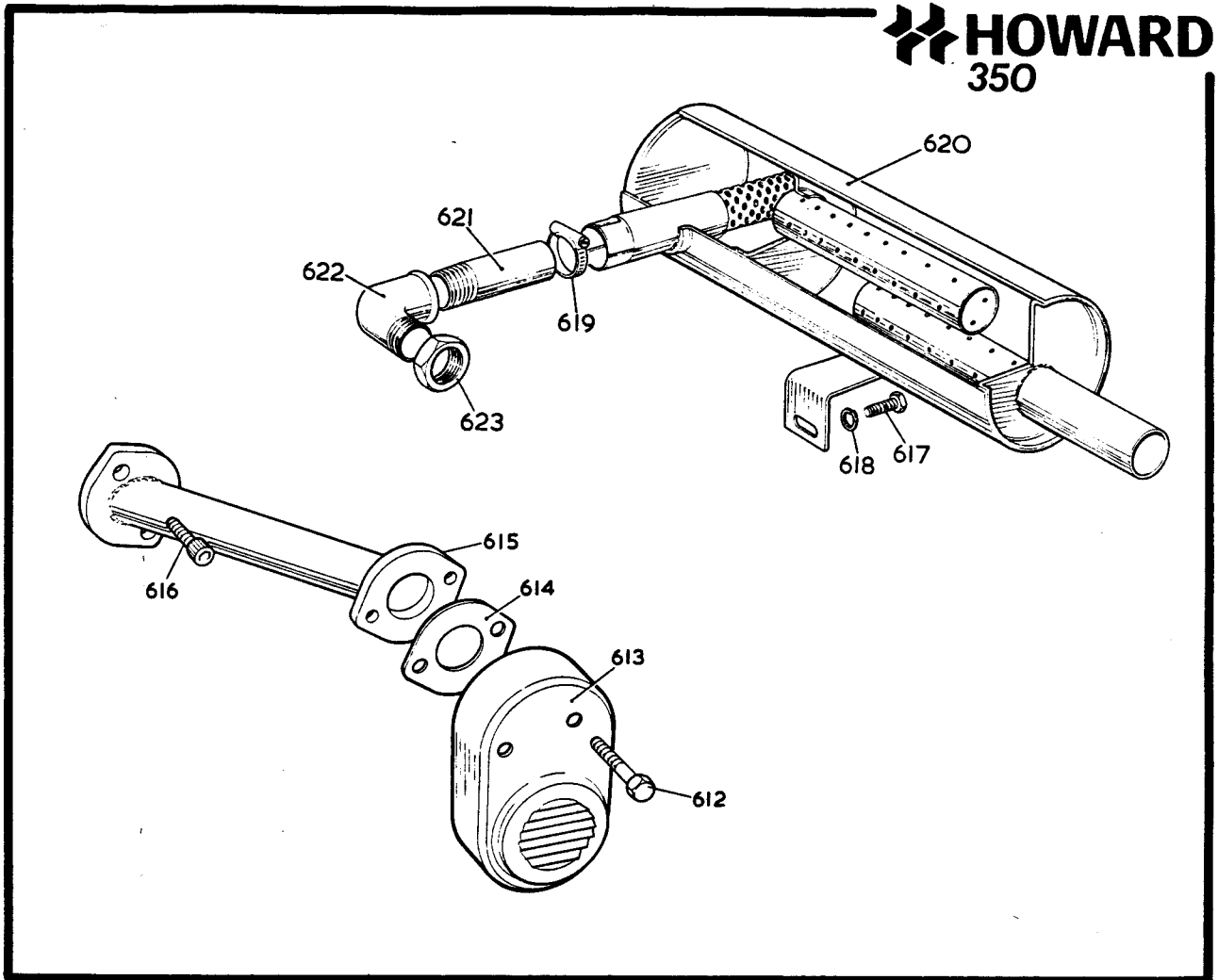


Engine base plate
Kohler K91.



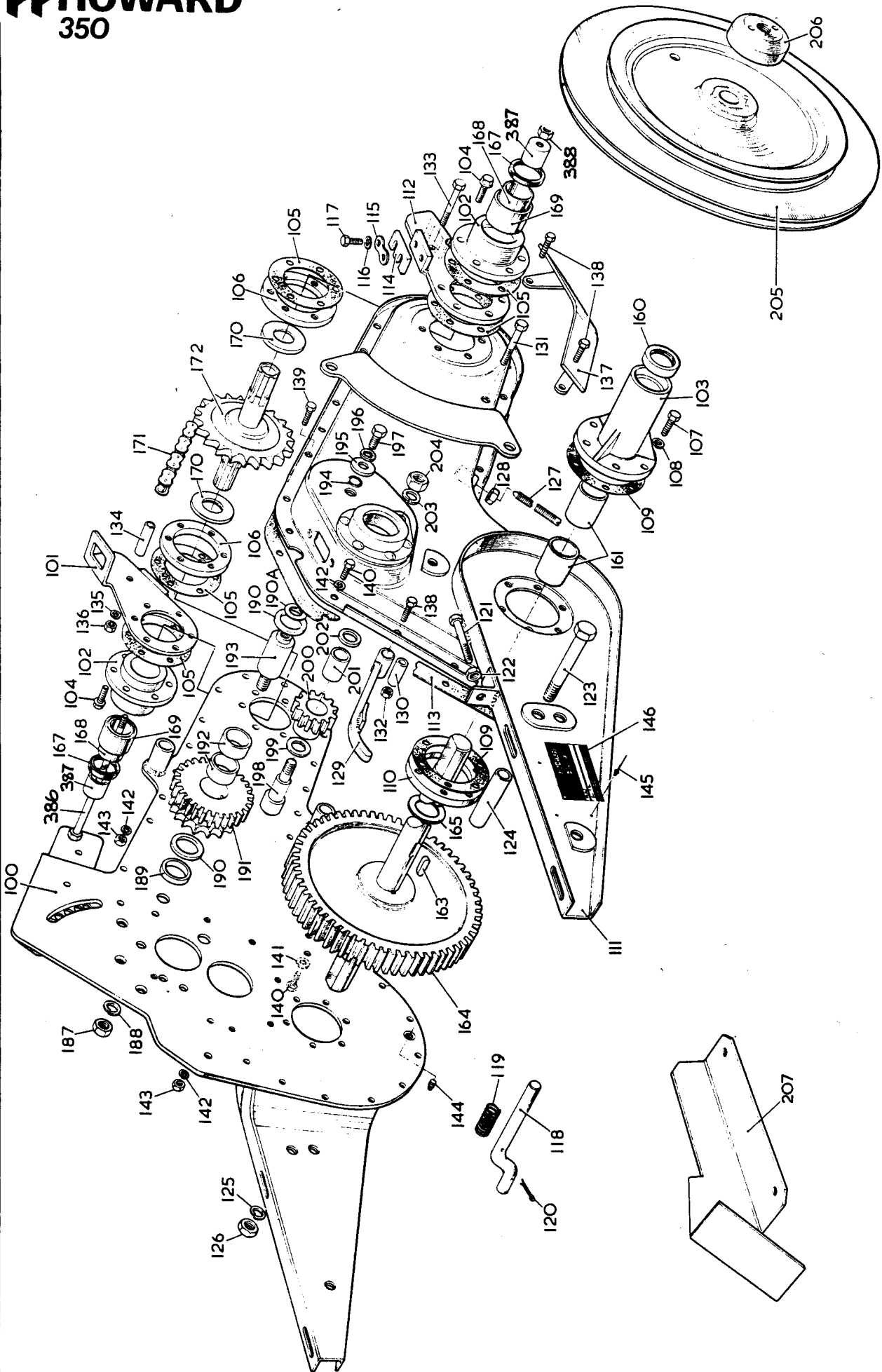
Power & Frame Unit

Item	Part No	Description	Qty.	Item	Part No.	Description	Qty.
N.I.	(59)	Kohler K91T engine - Howard '300'1		87	68831	Belt guard bracket	1
N.I.	(60)	Kohler K141T engine - Howard '350'1		88	65137	Vee-belt - Fenner Alpha 560 (204006170)	1
N.I.	(61)	Muffler - Kohler part no. 220145	1	89	69399	Belt guard extension	1
N.I.	(62)	Gasket - Kohler part no. 220122	1		69338	Air cleaner assembly comprising:-	1
N.I.	(63)	Muffler stud - Kohler part no. 220133	2	90	203034040	Air cleaner Cooper ref.4FD 1695A	1
N.I.	(64)	Nut - Kohler part no. X-81-1	2	91	208003090	Hose clip - size 2A	2
N.I.	(65)	68410 Exhaust gasket (Muffler elbow to engine)	1	92	69340	Air cleaner hose	1
N.I.	(66)	68317 Muffler elbow	1	93	69341	Stay	1
N.I.	(67)	101204120 Bolt 1/4" UNC x 1 1/2"	2	94	108040840	Spring washer 1/4"	1
N.I.	(68)	108040840 Spring washer 1/4"	2	95	101404060	Setscrew 1/4" UNC x 3/4" hex head	1
69	68306	Engine baseplate	1	96	59915	Gasket	1
70	101405090	Bolt 5/16" UNC x 1 1/8"	4	97	69339	Elbow	1
71	108051010	Flat washer 5/16"	4	98	69363	Stud	2
72	108050940	Spring Washer 5/16"	4	99	108030540	Spring washer 3/16"	2
73	107205010	Nut 5/16" UNC	4	99a	107208200	Nut No. 8 UNC	2
74	69551	Engine baseplate	1	Engine Conversion Kits			
75	69553	Engine baseplate - upper	1	68919	Briggs & Stratton to Kohler K91T comprising:-		
76	101206125	Bolt 3/8" UNC x 1 1/2"	2	Power unit - Kohler K91T			
77	101406085	Setscrew 3/8" UNC x 1" hex head	2	Illustration no. 44-51, 59, 61-67, 69-73, 81, 88.			
78	102406105	Bolt 3/8" UNC x 1 1/4" slotted countersunk head	2	Cone clutch assembly.			
79	108061145	Spring washer 3/8"	6	Illustration no. 2-4, 6-26, 30, 31, 34-36, 39.			
80	107206015	Nut 3/8" UNC	6	68920	Kohler K91T to Kohler K141T		
81	108051010	Flat washer 5/16"	4	Illustration no. 13, 14, 27-29, 60, 74-80, 90-99a.			
82	108050940	Spring washer 5/16"	4				
83	107205010	Nut 5/16" UNC	4				
84	68318	Belt guard	1				
85	107205065	Wing nut 5/16" UNC	2				
86	108051010	Flat washer 5/16"	1				



Exhaust System

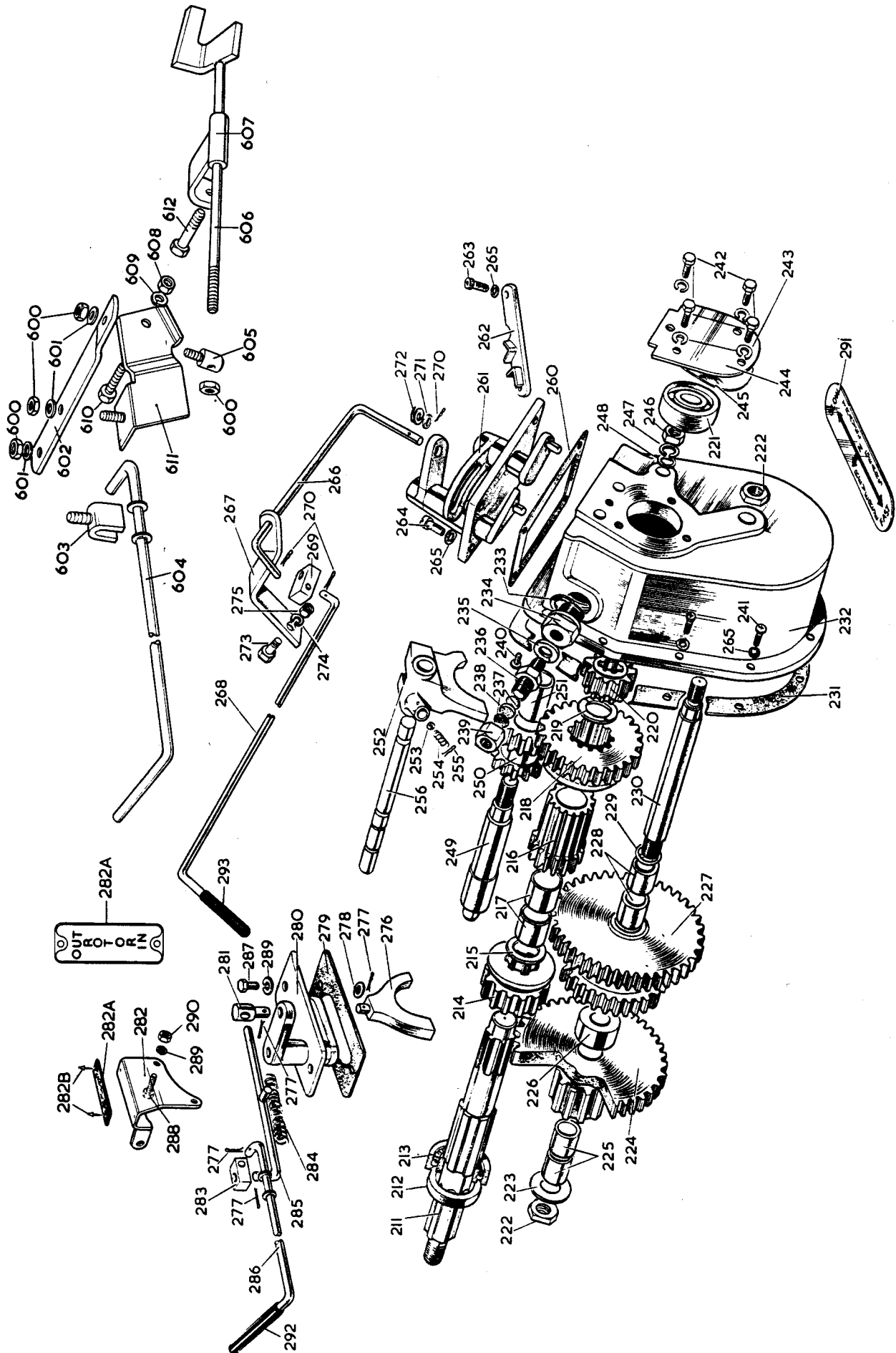
Item	Part No	Description	Qty.	Item	Part No	Description	Qty.
	58223	Exhaust extension assembly superseded by 58240					
		comprising:—					
612	101205105	Bolt $\frac{5}{16}$ " UNC x $1\frac{1}{4}$ "	2				
613	203220145	Muffler—Kohler 220145	1				
614	203231090	Gasket	1				
615	58224	Extension tube	1				
616	147405065	Socket head cap screw $\frac{5}{16}$ " UNC x $\frac{3}{4}$ "	2				
	58240	Muffler assembly	1				
		comprising:—					
617	101406060	Setscrew $\frac{3}{8}$ " UNC x $\frac{3}{4}$ "	1				
618	108061140	Spring washer $\frac{3}{8}$ "	1				
619	208003090	Hose clip 2A	1				
620	203027050	Muffler	1				
	58241	Muffler) Alternatives	1				
621	58243	Stube pipe	1				
622	202034320	Elbow 90° male/female 1" ASPT	1				
623	202041230	Back nut 1" ASPT	1				



Chaincase & Backplate



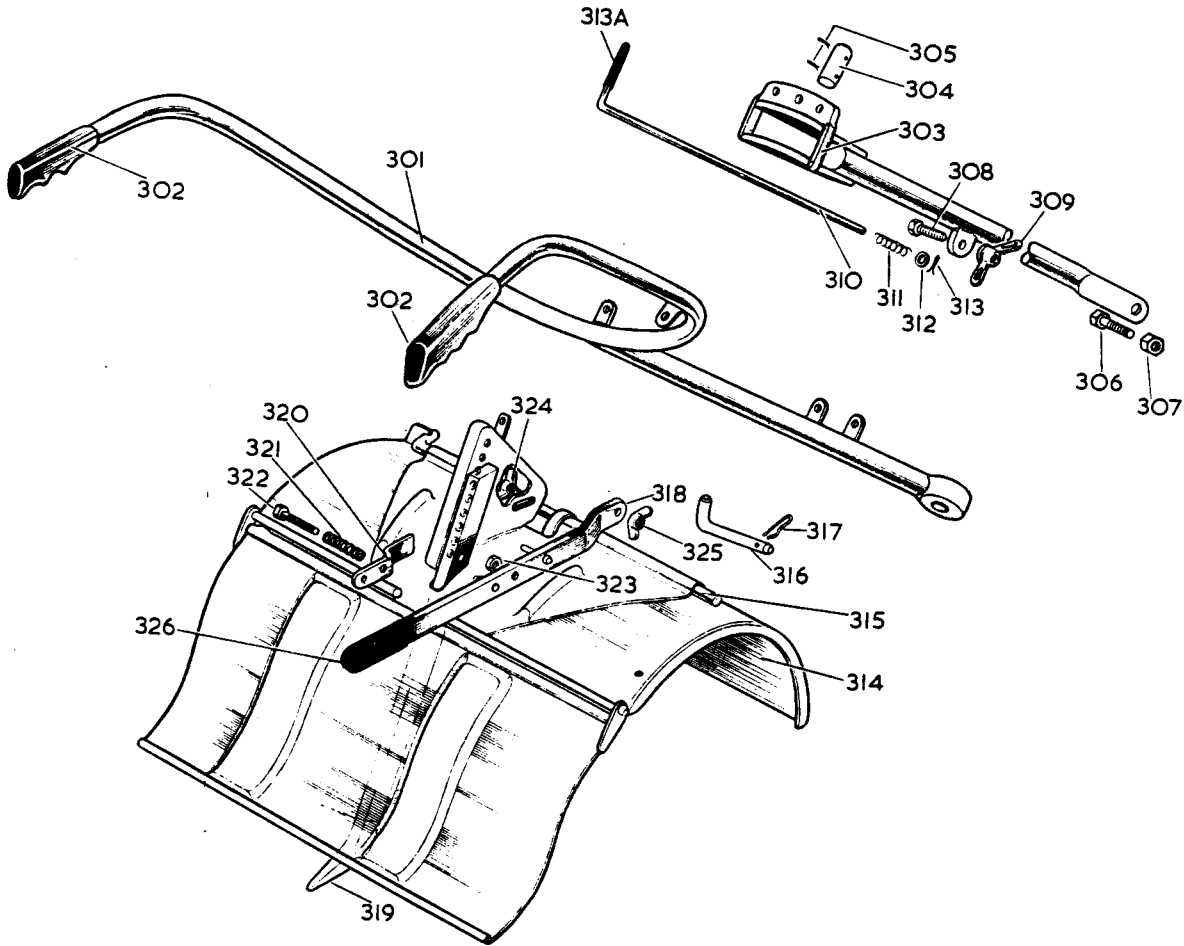
Item	Part No	Description	Qty.	Item	Part No	Description	Qty.
	64327	Backplate assembly comprising:-	1	Wheel and Rotor Drive			
100	66592	Backplate	1	160	261510041	Oilseal 1½" x 1" x 3/8" Pioneer 11P. 150.100.37	2
101	66638	Depth skid bracket	1	161	251011123	Bearing - Glacier No. 3210 - 1" x 1 1/8" x 1 1/4"	4
102	68714	Rotor bearing housing	2	162	Not allocated		
103	64330	Axle bearing housing	1	163	64497	Key	2
104	134404060	Whiz-tite flange screws 1/4" UNC x 3/4"	12	164	64342	Bull gear and wheel axle	1
105	69371	Gasket - rotor bearing housing	6	165	14224	Wearing washer	2
106	69207	Mounting plate	1	166	Not allocated		
110	69206	Mounting plate	1	167	261712023	Oilseal - superseal 900659C - 1021 - 011 - 1 3/16" x 1 3/4" x 3/16"	4
	64338	Chainbox assembly comprising:-	1	168	252530382	Inner race INA. IR 25mm x 30mm x 38.5mm	2
102	68714	Rotor bearing housing	1	169	253037264	Needle bearing INA. HK. 3026	2
103	64330	Axle bearing housing	2	170	64367	Thrust washer	2
106	69207	Mounting plate	1	171	64393	Chain assembly	1
107	101404060	Setscrew 1/4" UNC x 3/4" hex head	12	172	64364	Rotor drive shaft and sprocket	1
108	108040840	Spring washer 1/4"	12	173 - 186	Not allocated		
109	69370	Gasket - axle bearing housing	4	187	107208010	Nut 1/2" UNC	1
110	69206	Mounting plate	1	188	108081440	Spring washer 1/2"	1
111	66593	Chainbox	1	189	67256	Spacer	1
112	66638	Depth skid bracket	2	190	67257	Thrust washer	2
113	64394	Chaincase gasket	2	190a	69946	Gasket	1
114	64496	Weed cutter	2		67251	Rotor drive sprocket assembly comprising:-	1
115	830	Keeper plate	2	191	67252	Rotor drive sprocket	1
116	108040830	Shakeproof washer 1/4" internal	4	192	251011053	Bearing - Glacier No. 3204 1" x 1 1/8" x 1 1/2"	2
117	101304050	Setscrew 1/4" UNF x 5/8" hex head	4	193	67255	Drive sprocket spindle	1
	64468	Retaining pin sub-assembly comprising:-	1	194	202023140	'O' ring 7/16" x 5/8" Pioneer 3- 113	1
118	64469	Retaining pin	1	195	65114	Washer	1
119	30869	Spring	1	196	108051030	Shakeproof washer 5/16" internal	1
120	208010130	Split pin 3/32" x 3/4"	1	197	101405040	Setscrew 5/16" UNC x 1/2" hex head	1
121	64495	Adjusting bolt	1	198	67250	Idler pinion shaft	1
122	107206015	Nut 3/8" UNC cad. plated	1	199	64320	Gear spacer	1
123	101108280	Bolt 1/2" UNF x 3 1/2"	1		67248	Rotor idler gear assembly comprising:-	1
124	64392	Spacer	1	200	67249	Rotor idler gear	1
125	108081440	Spring washer 1/2"	1	201	250709103	Bearing - Glacier No. 2408 - 3/4" x 7/8" x 1"	1
126	107108010	Nut 1/2" UNF	1	202	64317	Thrust washer	1
127	67280	Adjuster screw	1	203	108071240	Spring washer 7/16"	1
128	107205020	Locknut 5/16" UNC	1	204	107207010	Nut 7/16" UNC	1
129	67275	Chain tensioner	1	205	66452	Driven Pulley	1
130	67281	Sleeve	1	206	67605	Pulley nut	1
131	101105140	Bolt 5/16" UNF x 1 3/4"	1	207	58222	Lower belt guard (Scandinavia only)	1
132	107105030	Philidas Nut 5/16" UNF GUF/1	1	208 - 210	Not allocated		
133	101204160	Bolt 1/4" UNC x 2"	1				
134	64391	Skid bracket spacer	1				
135	108040840	Spring washer 1/4"	1				
136	107204010	Nut 1/4" UNC	1				
137	65131	Chaincase skid	1				
138	101404070	Setscrew 1/4" UNC x 7/8" hex head	5				
139	101404060	Setscrew 1/4" UNC x 3/4" hex head	22				
140	101404040	Setscrew 1/4" UNC x 1/2" hex head	2				
141	25578	Fibre washer	1				
142	108040840	Spring washer 1/4"	28				
143	107204010	Nut 1/4" UNC	27				
144	203031160	Plug 1/8" BSP square head	1				
145	208032020	Pop rivet 3/32" x 0.2	2				
146	58197	Machine number plate	1				
147 - 159	Not allocated						



Gearbox Assembly

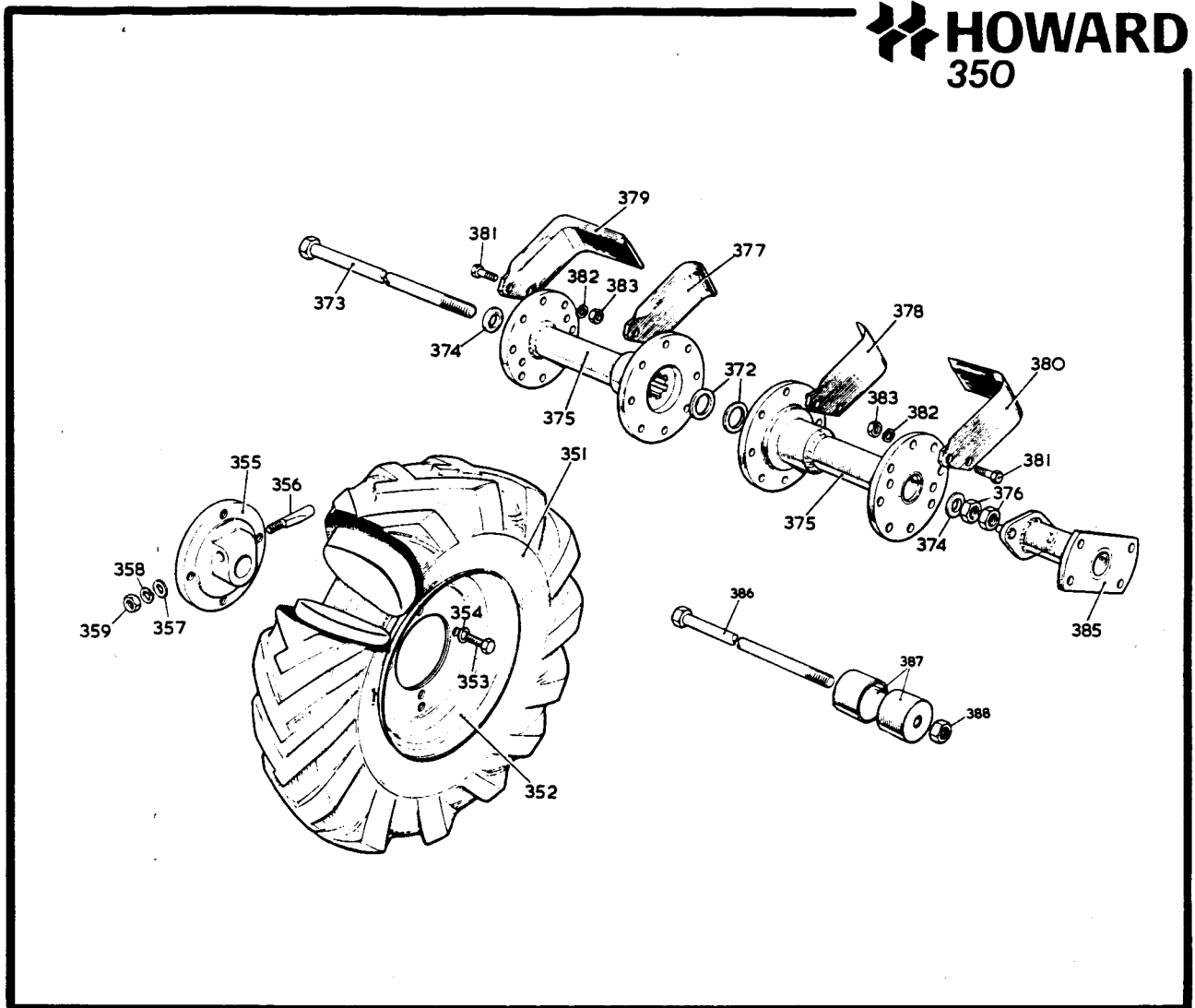


Item	Part No	Description	Qty.	Item	Part No	Description	Qty.
211	64315	Drive shaft	1	263	106404060	Capscrew $\frac{1}{4}$ " UNC x $\frac{3}{4}$ "	2
212	261511021	Oilseal - Pioneer 11P.150.112.25	1	264	103404050	Cheese head setscrew $\frac{1}{4}$ " UNC x $\frac{5}{8}$ "	2
213	250720071	Ballbearing $\frac{3}{4}$ " x 2" x $\frac{11}{16}$ " Hoff MS 8	1	265	108040830	Shakeproof washer $\frac{1}{4}$ " Internal	6
214	64316	Rotor selector gear	1	266	65507	Lower control rod	1
215	64320	Gear spacer	1	267	65439	Control rod bracket	1
	64318	Intermediate drive gear assembly comprising:-	1	268	69183	Upper control rod	1
216	64361	Drive gear	1	269	65506	Gear control trunnion	1
217	250709073	Bearing - Glacier No. 2406 $\frac{3}{4}$ " x $\frac{7}{8}$ " x $\frac{3}{4}$ "	2	270	208010050	Split pin $\frac{1}{16}$ " x $\frac{5}{8}$ "	3
218	64319	Drive shaft gear 27T	1	271	108051010	Flat washer $\frac{5}{16}$ "	1
219	64317	Thrust washer	1	272	108050950	Spring washer $\frac{5}{16}$ " double coil	1
220	64321	Drive shaft gear 13T	1	273	101304080	Bolt $\frac{1}{4}$ " UNF x 1"	1
221	250616041	Ballbearing $\frac{5}{8}$ " x $1\frac{9}{16}$ " x $\frac{7}{16}$ " Hoff LS 7	1	274	108040840	Spring washer $\frac{1}{4}$ "	1
222	107206020	Locknut $\frac{3}{8}$ " UNC	2	275	107104010	Nut $\frac{1}{4}$ " UNF	1
223	67264	Thrust washer	1		68792	Rotor selector control assembly comprising:-	1
	67260	Final drive pinion assembly comprising:-	1	276	64390	Rotor selector	1
224	67261	Final drive pinion	1	277	208010040	Split pin $\frac{1}{16}$ " x $\frac{1}{2}$ "	4
225	250607063	Bearing - Glacier No. 2005 $\frac{5}{8}$ " x $\frac{23}{32}$ " x $\frac{5}{8}$ "	2	278	108040910	Flat washer $\frac{1}{4}$ "	1
226	67262	Gear spacer	1	279	65499	Gasket	1
	67258	Cluster gear assembly comprising:-	1	280	68793	Rotor selector	1
227	67259	Cluster gear	1	281	68910	Trunnion	1
228	250607063	Bearing - Glacier No. 2005 - $\frac{5}{8}$ " x $\frac{23}{32}$ " x $\frac{5}{8}$ "	2		58236	Selector gate assembly comprising:-	1
229	67495	Shim .015	As Req.	282	68798	Selector gate	1
	67494	Shim .010	As Req.	282a	58235	Indicator plate	1
230	67263	Intermediate shaft	1	282b	208032060	Rivet $\frac{1}{8}$ " x .23 TAP/D423/BS	1
231	64395	Gearbox gasket	1	283	20545	Trunnion block	1
232	64308	Gearbox	1	284	68909	Rotor selector spring	1
233	202029040	Washer - Benton & Stone No. 1386D	1	285	68795	Rotor selector rod	1
234	66274	Plug	1	286	58217	Rotor control rod	1
	66193	Breather assembly comprising:-	1	287	101404040	Setscrew $\frac{1}{4}$ " UNC x $\frac{1}{2}$ " hex head	2
235	10580	Washer	1	288	101404060	Setscrew $\frac{1}{4}$ " UNC x $\frac{3}{4}$ " hex head	2
236	8312	Brass union	1	289	108040840	Spring washer $\frac{1}{4}$ "	4
237	23646	Gauze filter	2	290	107204010	Nut $\frac{1}{4}$ " UNC	2
238	66195	Breather pad	1	291	64326	Label - gear selection	1
239	202041020	Nut	1	292	207001290	Sleeve - rotor control rod	1
240	143405030	Setscrew $\frac{5}{16}$ " UNC x $\frac{3}{8}$ " shallow countersunk head	3	293	207001300	Sleeve - upper control rod	1
241	116404040	Setscrew $\frac{1}{4}$ " UNC x $\frac{1}{2}$ " round head Phillips recess	6	294	58237	Over-run stop sleeve	1
242	101404040	Setscrew $\frac{1}{4}$ " UNC x $\frac{1}{2}$ " hex head	4	295 - 300		Not allocated	
243	108040840	Spring washer $\frac{1}{4}$ "	4	Reverse Lock Assembly			
244	64352	Bearing and slide bar cover	1		58208	Reverse Lock assembly comprising:-	1
245	64459	Gasket	As Req.	600	107204030	Locknut $\frac{1}{4}$ " UNC	4
246	107206010	Nut $\frac{3}{8}$ " UNC	1	601	108040510	Flat washer $\frac{1}{4}$ "	3
247	108061140	Spring washer $\frac{3}{8}$ "	1	602	58215	Lever	1
248	108061210	Flat washer $\frac{3}{8}$ "	1	603	58218	Clevis	1
249	64334	Reverse spindle	1	604	58217	Rotor control rod	1
	64362	Reverse gear assembly comprising:-	1	605	58216	Trunnion	1
250	64363	Reverse gear	1	606	58229	Wedge	1
251	250607103	Bearing - Glacier No. 2008 - $\frac{5}{8}$ " x $\frac{23}{32}$ " x 1"	1	607	58210	Tube	1
252	64322	Travel selector	1	608	107204010	Nut $\frac{1}{4}$ " UNC	1
253	250001801	Ball $\frac{3}{16}$ "	1	609	108040840	Spring washer $\frac{1}{4}$ "	1
254	64471	Spring	1	610	101404070	Screw $\frac{1}{4}$ " UNC x $\frac{7}{8}$ "	1
255	208010040	Split pin $\frac{1}{16}$ " x $\frac{1}{2}$ "	1	611	58230	Support bracket	1
256	64325	Travel selector slide bar	1				
257	64323	Reverse selector	1				
258	64324	Reverse selector slide bar	1				
259	64472	Reverse selector spring	1				
260	58231	Cover gasket .030"	1				
	64379	Cover gasket .010"	As Req.				
261	66356	Gearbox cover and selectors	1				
262	66750	Selector gate	1				



Handlebars & Shield

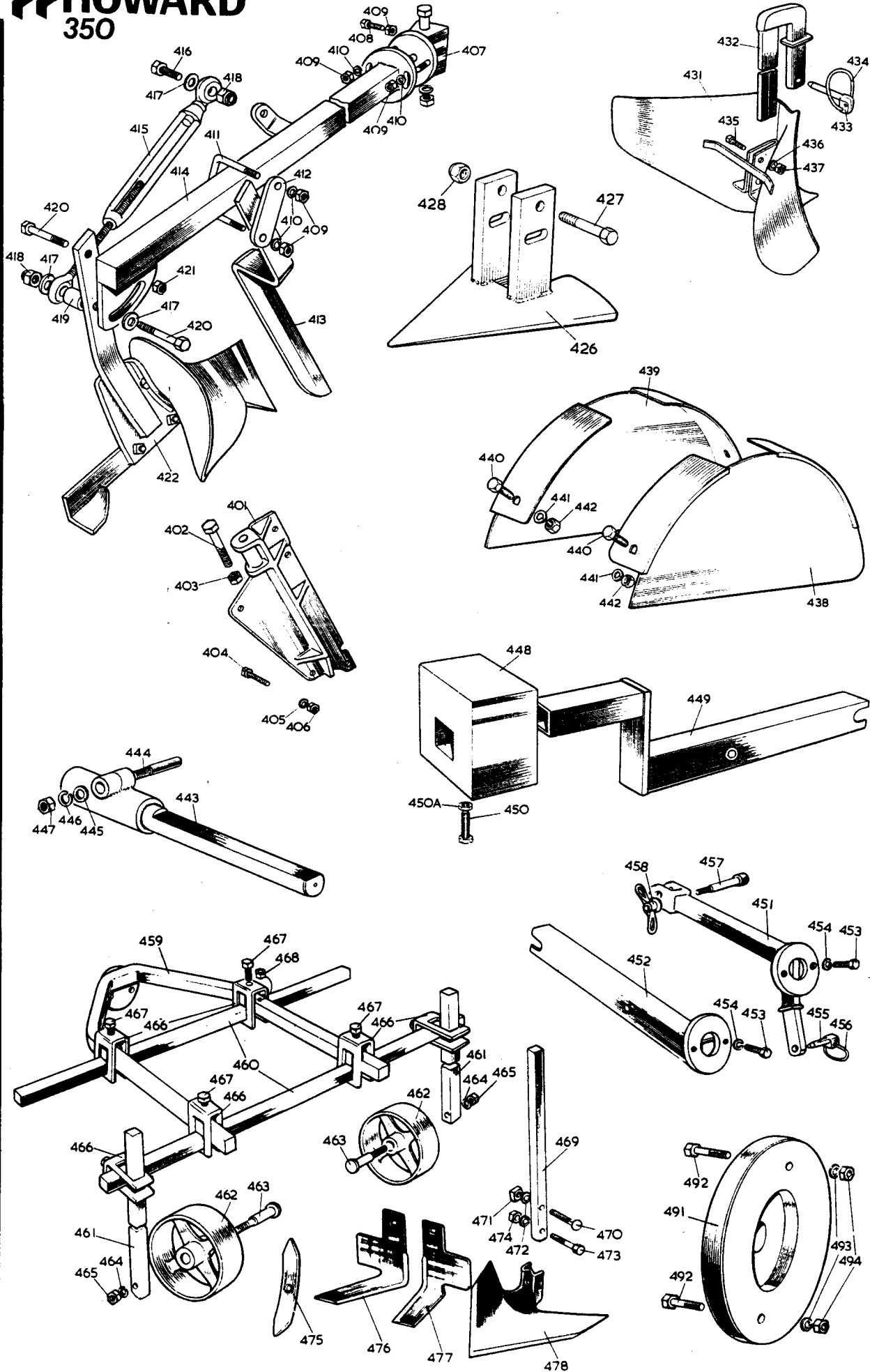
Item	Part No	Description	Qty.	Item	Part No	Description	Qty.
301	65431	Handle bar stem (Not Scandinavia)	1	Machine Transfers			
302	207001350	Handle bar grip	2	N.I.	27409	Beware rotating blades - English	1
303	65432	Handle bar mounting	1	N.I.	27410	Beware rotating blades - Finnish	1
304	65433	Pin	1	N.I.	27411	Beware rotating blades - Swedish	1
305	208010200	Split pin $\frac{1}{8}$ " x 1"	2	N.I.	58194	Royal Warrant and Queen's Award	1
306	101306080	Bolt $\frac{3}{8}$ " UNF x 1"	1	N.I.	58249	Howard	1
307	107106030	Philidas nut $\frac{3}{8}$ " UNF JUF1	1	N.I.	58279	'350'	1
308	101306100	Bolt $\frac{3}{8}$ " UNF x $1\frac{1}{2}$ "	1	291	64326	Gear selection label	1
309	207001150	Wing nut $\frac{3}{8}$ " UNF Utility Cycle No21	1	N.I.	66414	Maintenance label	1
310	65430	Release handle	1	N.I.	68610	+Engine label	1
311	58234	Spring	1	+To be fitted to top of stop switch part number 207005100. Illustration no. 46.			
312	108061210	Flat washer $\frac{3}{8}$ "	1				
313	208010130	Split pin $\frac{3}{32}$ " x $\frac{3}{4}$ "	1				
313a	207001310	Sleeve - release handle	1				
Shields							
314	64431	Rotor shield - 16" model	1				
314	64455	Rotor shield - 23" model	1				
315	64439	Shield securing pin	1				
316	67284	Shield securing pin	1				
317	67285	Clip pin	1				
318	64440	Depth control handle	1				
319	64446	Depth skid	1				
320	64445	Spring clip	1				
321	20470	Spring	1				
322	101204120	Bolt $\frac{1}{4}$ " UNC x $1\frac{1}{2}$ "	1				
323	107204010	Nut $\frac{1}{4}$ " UNC	1				
324	64443	Depth control handle pivot bolt	1				
325	107205060	Wing nut $\frac{5}{16}$ " UNC	1				
326	207001280	Sleeve - depth control handle	1				



Rotor & Wheels

Item	Part No	Description	Qty.	Item	Part No	Description	Qty.
	209028230	Wheel assembly L.H.	1	385	64451	Rotor extension	2
	209055510	Wheel assembly R.H.	1		59917	Rotor extension kit 16"-23" comprising:-	
351	209001360	Tyre 400 x 8 2 ply rating	2	314	64455	Shield 23"	1
	209001370	Tube 400 x 8	2	373	64450	Rotor draw bolt - 23" model	1
352	64467	Wheel	2	379	9896	Blade L.H.	2
353	101406065	Setscrew $\frac{3}{8}$ " UNC x $\frac{3}{4}$ "	8	380	9897	Blade R.H.	2
354	108061145	Spring washer $\frac{3}{8}$ "	8	1	14144	Blade bolt assembly pack (contains 10 each items 181,182,183)	As Req.
355	64465	Wheel hub	2	381	9846	Special bolt	8
356	64466	Cotter pin	2	382	108050940	Spring washer $\frac{5}{16}$ "	8
357	108061210	Flat washer $\frac{3}{8}$ "	2	383	107105010	Nut $\frac{5}{16}$ " UNF	8
358	108061145	Spring washer $\frac{3}{8}$ "	2	385	64451	Rotor extension 23" model	2
359	107106015	Nut $\frac{3}{8}$ " UNF	2	386	65476	Draw bolt) Required when	2
360 - 371	Not allocated			387	65475	Dust cap) rotors are	2
				388	107105010	Nut $\frac{5}{16}$ " UNF) removed.	1
				389 - 400	Not allocated		
372	64429	Rotor spacer	16" As Req.				
373	64427	Rotor draw bolt	1				
	64450	Rotor draw bolt	1				
374	64430	Draw bolt washer	2				
375	64420	Rotor	2				
376	107210020	Locknut $\frac{5}{8}$ " UNC	2				
377	64486	Centre blade L.H.	2				
378	64485	Centre blade R.H.	2				
379	9896	Blade L.H.	4				
380	9897	Blade R.H.	4				
	14144	Blade bolt assembly pack (contains 10 each items 181,182,183)	As Req.				
381	9846	Special bolt	24				
382	108050940	Spring washer $\frac{5}{16}$ "	24				
383	107105010	Nut $\frac{5}{16}$ " UNF	24				
384	Not allocated						

HOWARD 350



Attachments



Item	Part No	Description	Qty.	Item	Part No	Description	Qty.
Trailer and Plough Hitch Bracket Assembly				Toolbar Unit			
	66296	Trailer and Plough Hitch Bracket	1	64935	Toolbar unit		1
401	65517	Hitch bracket	1	451	67589	Rear toolbar adaptor	1
402	101110320	Bolt $\frac{5}{8}$ " UNF x 4"	1	452 *	64942	Front toolbar adaptor	1
403	107110010	Nut $\frac{5}{8}$ " UNF	1	453	101406100	Setscrew $\frac{3}{8}$ " UNC x $1\frac{1}{4}$ "	2
404	101404070	Setscrew $\frac{1}{4}$ " UNC x $\frac{7}{8}$ " hex head	5	454	108061140	Spring washer $\frac{3}{8}$ "	2
405	108040840	Spring washer $\frac{1}{4}$ "	5	455	7059	Clip pin	1
406	107204010	Nut $\frac{1}{4}$ " UNC	5	456	7060	Clip ring	1
NOTE: Use 1 off $\frac{1}{4}$ " UNC x $\frac{5}{8}$ " long setscrew, nut and spring washer, from those removed from chaincase.				457	67592	Securing pin	1
Plough Assembly				458	207001150	Wing nut $\frac{3}{8}$ " UNF - Utility Cycle Product Model No. 2	1
	66326	Plough Assembly	1	69189	Tool frame and tools assembly comprising:-		1
407	66332	Plough pivot bracket	1	69190	Tool Frame Assembly comprising:-		1
408	101406120	Setscrew $\frac{3}{8}$ " UNC x $1\frac{1}{2}$ " hex head	1	459	69195	Arms and flange	1
409	107206010	Nut $\frac{3}{8}$ " UNC	5	460	69194	Crossbar	2
410	108061140	Spring washer $\frac{3}{8}$ "	4	461	69191	Wheel stalk	2
411	66342	'U' bolt	1	462	69193	Wheel	2
412	66343	Clamp plate	1	463	69192	Wheel spindle	2
413	66341	Coulter	1	464	108061140	Spring washer $\frac{3}{8}$ "	2
414	66327	Plough beam	1	465	107506010	Nut $\frac{3}{8}$ " BSF	2
415	208007230	Straining screw $\frac{3}{8}$ " screw Harris Lifting Tackle No651	1	17314	Clamp assembly comprising:-		11
416	101208140	Bolt $\frac{1}{2}$ " UNC x $1\frac{3}{4}$ "	1	466	17312	Clamp	11
417	108081610	Flat washer $\frac{1}{2}$ "	3	467	101308090	Setscrew $\frac{1}{2}$ " UNF x $1\frac{1}{8}$ " hex head	11
418	107208030	Nut $\frac{1}{2}$ " UNC Philidas NUCI	2	468	107108010	Nut $\frac{1}{2}$ " UNF	11
419	10317	Boss	1	69198	Hoe and stalk assembly comprising:-		1
420	101408220	Setscrew $\frac{1}{2}$ " UNC x $2\frac{3}{4}$ " hex head	2	475	69199	Point-1" Close Youle P/2507/1" D1	4
421	107208020	Locknut $\frac{1}{2}$ " UNC	1	69200	Pistol hoe and stalk assembly R.H. comprising:-		2
422	66339	Plough	1	469	69209	Stalk	2
423 - 425	Not allocated			470	105205110	Coach bolt $\frac{5}{16}$ " UNC x $1\frac{3}{8}$ " Cup sq.	2
Skid Tine Assembly				471	107205010	Nut $\frac{5}{16}$ " UNC	4
	68647	Skid Tine Assembly	1	472	108050940	Spring washer $\frac{5}{16}$ "	4
426	68488	Skid Tine	1	473	101205110	Bolt $\frac{5}{16}$ " UNC x $1\frac{3}{8}$ "	2
427	101205120	Bolt $\frac{5}{16}$ " UNC x $1\frac{1}{2}$ "	2	476	69187	Pistol hoe R.H.-Close Youle-SH/2702/4 $\frac{1}{2}$ /D1	2
428	107205130	Nut $\frac{5}{16}$ " UNC Philidas Self-locking GUCP/1	2	69201	Pistol hoe and stalk assembly L.H. comprising:-		2
429 - 430	Not allocated			469	69209	Stalk	2
Furrower Assembly				470	105205110	Coach bolt $\frac{5}{16}$ " UNC x $1\frac{3}{8}$ " Cup sq.	2
	65946	Furrower assembly	1	471	107205010	Square nut $\frac{5}{16}$ " UNC	4
431	14136	Furrower	1	472	108050940	Spring washer $\frac{5}{16}$ "	4
432	65478	Furrower bracket	1	473	101205110	Bolt $\frac{5}{16}$ " UNC x $1\frac{3}{8}$ "	2
433	7059	Clip pin	1	477	69188	Pistol hoe L.H. - Close Youle - SH/2702/4 $\frac{1}{2}$ /D1	2
434	7060	Clip ring	1	69202	Ducksfoot hoe and stalk assembly comprising:-		1
435	101405080	Setscrew $\frac{5}{16}$ " UNC x 1"	1	469	69185	Stalk	1
436	108050940	Spring washer $\frac{5}{16}$ "	1	470	105206110	Coach bolt $\frac{3}{8}$ " UNC x $1\frac{3}{8}$ " Cup sq.	1
437	107205010	Nut $\frac{5}{16}$ " UNC	1	471	107206010	Nut $\frac{3}{8}$ " UNC	1
Side Shields				472	108061140	Spring washer $\frac{3}{8}$ "	1
438	65170	Side shield L.H.	1	478	68765	Ducksfoot hoe-Close Youle CY/135/6"	1
439	65171	Side shield R.H.	1	479-490 Not allocated			
440	101405050	Setscrew $\frac{5}{16}$ " UNC x $\frac{5}{8}$ "	4	Wheel Weight Assembly			
441	108050940	Spring washer $\frac{5}{16}$ "	4	64957	Wheel weight assembly		1
442	107205010	Nut $\frac{5}{16}$ " UNC	4	491	64958	Wheel weight	2
Extension Axle Assembly				492	101106240	Bolt $\frac{3}{8}$ " UNF x 3"	4
	64484	Extension axle assembly	1	493	108061140	Spring washer $\frac{3}{8}$ "	4
443	64481	Extension axle	2	494	107106010	Nut $\frac{3}{8}$ " UNF	4
444	64466	Cotter pin	2	NOTE: *The front toolbar adaptor is required to operate Tarpen hedge-trimmers and allied cable-driven equipment.			
445	108061210	Flat washer $\frac{3}{8}$ "	2				
446	108061140	Spring washer $\frac{3}{8}$ "	2				
447	107106010	Nut $\frac{3}{8}$ " UNF	2				
Front Weight Assembly							
	66162	Front weight assembly	1				
448	66185	Weight	1				
449	66186	Weight beam	1				
450	101406140	Setscrew $\frac{3}{8}$ " UNC x $1\frac{3}{4}$ " hex head	1				
450a	107206020	Hex. Locknut $\frac{3}{8}$ " UNC	1				